

# Technical data sheet

## Product features



### Freezing cabinet 700 l GN 2/1, stainless steel, left door

<b>Model</b>	<b>SAP Code</b>	00021696
--------------	-----------------	----------



- GN / EN size in device: GN 2/1
- Chamber volume [l]: 458
- Minimum device temperature [°C]: -24
- Maximum device temperature [°C]: -10
- Insulation thickness [mm]: 90
- Interior lighting: No
- Door lock: Yes
- Automatic defrost: Yes
- HACCP: Yes
- Annual energy consumption [kWh]: 2436

<b>SAP Code</b>	00021696	<b>Gross Volume [m3]</b>	1.445
<b>Net Width [mm]</b>	733	<b>Net Volume [m3]</b>	1.298
<b>Net Depth [mm]</b>	847	<b>Number of internal parts</b>	20
<b>Net Height [mm]</b>	2090	<b>Number of GN / EN</b>	24
<b>Net Weight [kg]</b>	142.20	<b>GN / EN size in device</b>	GN 2/1
<b>Power electric [kW]</b>	0.526	<b>Minimum device temperature [°C]</b>	-24
<b>Loading</b>	230 V / 1N - 50 Hz	<b>Maximum device temperature [°C]</b>	-10
<b>Energy class</b>	E	<b>Refrigerant</b>	R290
<b>Chamber volume [l]</b>	458	<b>Climate class</b>	5

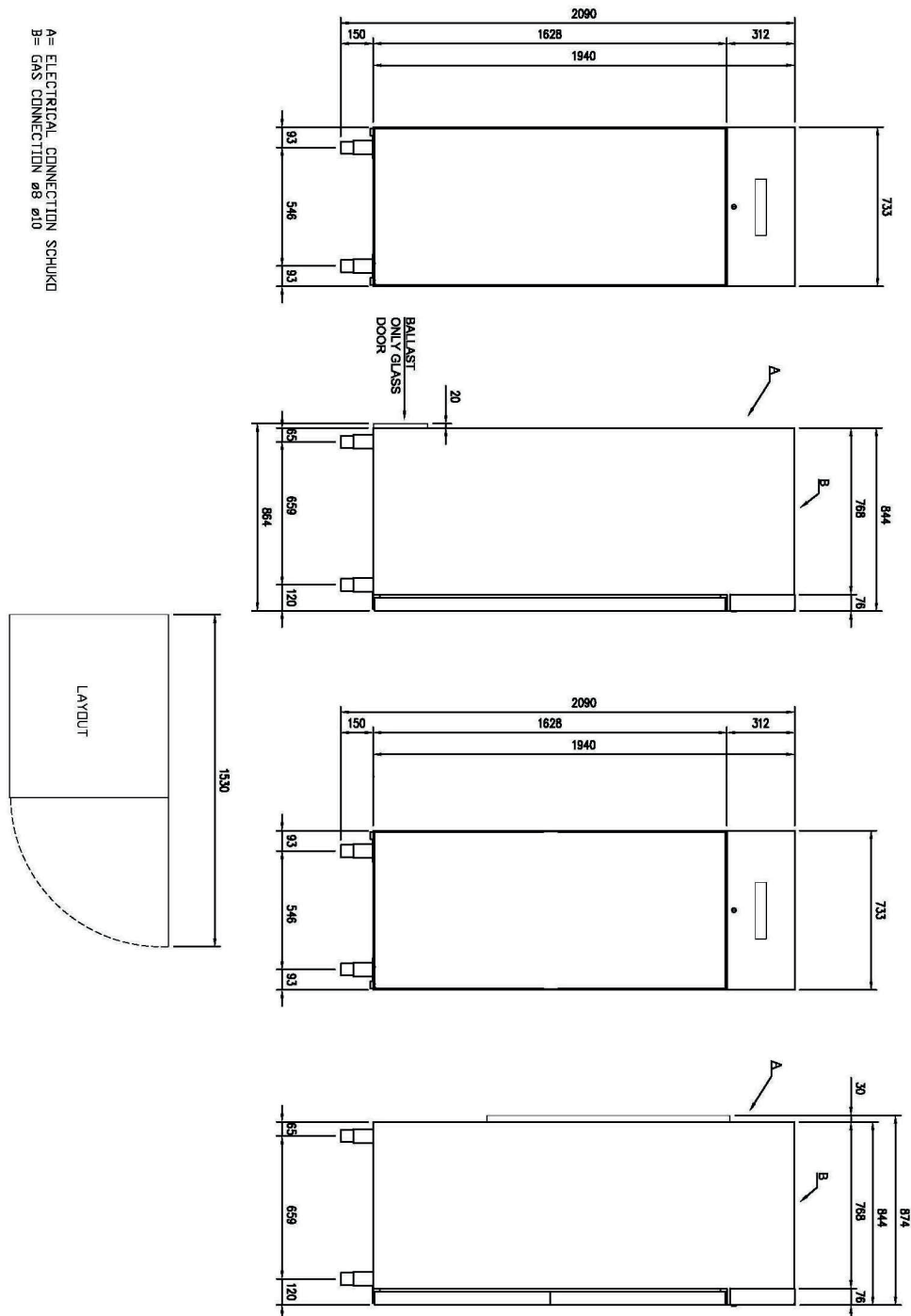
# Technical data sheet

Technical drawing



Freezing cabinet 700 l GN 2/1, stainless steel, left door

<b>Model</b>	<b>SAP Code</b>	00021696
--------------	-----------------	----------



# Technical data sheet

## Product benefits



### Freezing cabinet 700 l GN 2/1, stainless steel, left door

Model

SAP Code

00021696

1

#### Insulation 90mm

minimal losses  
– energy saving

2

#### Two-sided opening

location variability  
– greater operational efficiency  
– better kitchen ergonomics

3

#### All-stainless design

corrosion resistance  
– longer service life  
– health safety

4

#### Automatic defrosting

nothing needs to be watched  
– always working properly without extra operator requirements

5

#### Wheels, legs

variability  
– user comfort

6

#### High energy class

minimal energy loss  
high efficiency  
guaranteed chilled food  
– cost saving  
– hygienic safety

# Technical data sheet

Technical parameters



## Freezing cabinet 700 l GN 2/1, stainless steel, left door

**Model**

**SAP Code**

00021696

**1. SAP Code:**

00021696

**2. Net Width [mm]:**

733

**3. Net Depth [mm]:**

847

**4. Net Height [mm]:**

2090

**5. Net Weight [kg]:**

142.20

**6. Gross Width [mm]:**

763

**7. Gross depth [mm]:**

873

**8. Gross Height [mm]:**

2170

**9. Gross Weight [kg]:**

157.20

**10. Device type:**

Electric unit

**11. Power electric [kW]:**

0.526

**12. Loading:**

230 V / 1N - 50 Hz

**13. Energy class:**

E

**14. Refrigerant:**

R290

**15. Material:**

AISI 304

**16. Exterior color of the device:**

Stainless steel

**17. Max ambient temperature [°C]:**

40

**18. Device properties 2:**

Bakery

**19. GN / EN size in device:**

GN 2/1

**20. Number of internal parts:**

20

**21. Number of GN / EN:**

24

**22. Chamber volume [l]:**

458

**23. Gross Volume [m3]:**

1.445

**24. Net Volume [m3]:**

1.298

**25. Adjustable feet:**

Yes

**26. Insulation thickness [mm]:**

90

**27. Number of doors:**

1

**28. Unit:**

Yes

# Technical data sheet

Technical parameters



## Freezing cabinet 700 l GN 2/1, stainless steel, left door

**Model**

**SAP Code**

00021696

**29. Door lock:**

Yes

**34. Maximum device temperature [°C]:**

-10

**30. Interior lighting:**

No

**35. Automatic defrost:**

Yes

**31. HACCP:**

Yes

**36. Climate class:**

5

**32. Annual energy consumption [kWh]:**

2436

**37. Cross-section of conductors CU [mm<sup>2</sup>]:**

0,5

- Výkon (kW): 2,4-3,3 (230 V)

**33. Minimum device temperature [°C]:**

-24